

Sou - Earphones - TWS wireless earphones



SHINY 2 TWS earphones pink

TRENDY AND CUTTING-EDGE EARPHONES!

The unique shapes of the SHINY 2 headphones have been designed to combine ergonomics and performance, and their sleek and ultra-compact design has made these headphones both light and comfortable!

Based on the biggest global trends in terms of fashion and colors for the year 2022, we have chosen a few colors to dress the case and thus make it a fashion accessory in its own right.

In addition, thanks to Bluetooth 5.1 technology, it is possible to enjoy an extended battery life of around 20 hours as well as an even more faithful sound reproduction.

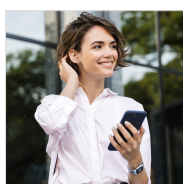
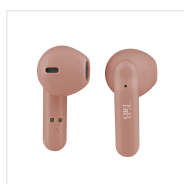
The supplied charging box will allow you to carry your headphones everywhere while recharging them! Thanks to its LED battery indicator, you will always be aware of the battery available in your charging case. It also tells you the charge level of the headphones.

In addition, the "touch control" function allows you to control your music or answer your calls simply by touching your headphones!

Also enjoy fast charging in 1 hour with the supplied Type-C charging cable.

With the feeling of not wearing any headphones, the SHINY 2 range offers you a new way to experience your music.

The SHINY 2 headphones are the latest technology at the cutting edge of fashion.



BOX CONTENTS

1 x Charging case
2 x Shiny 2 TWS Earphones

1 x USB-C cable
1 x User manual



Characteristics



20h



Bluetooth 5.1



USB-C



Touch control



Pink



13



Semi-intra



32



Taking calls



10m range



95

Ref.: EBSHINYPK2



3303170 109298

Packing: 4
Net weight (g): 44
Weight with packaging (g): 123
Product size (cm):
Packing size (cm): 7.5x4x16

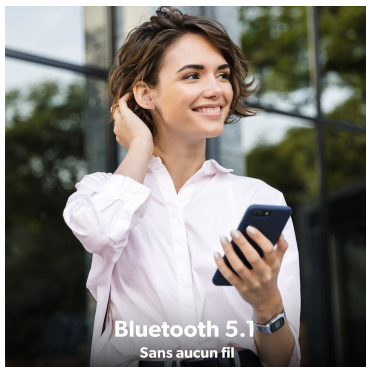


More info...

www.tnb.com
La Marque Française

FOLLOW US ON **SOCIAL MEDIA** @tnb_officiel @tnb

Exprime ta personnalité à travers ta musique !



-  **Bluetooth 5.1**
-  **Autonomie 20 heures**
-  **Indicateur de charge**
-  **Format semi-intra auriculaire - design ergonomique**
-  **Commandes intégrées**
-  **Microphone intégré : appels clairs**

